

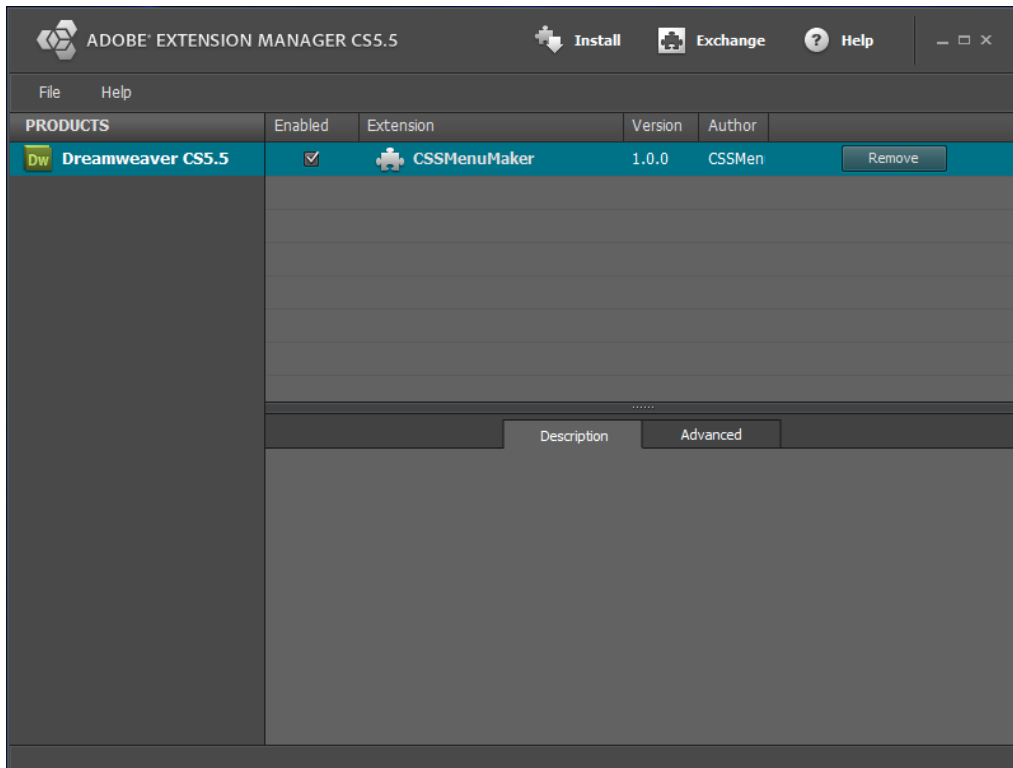


CSS Menu Maker Dreamweaver Extension

User Guide

Install

To install the extension simply double click the .zxp file and the Adobe Extension manager should launch. When it ask you to install the extension click 'Yes'. If you have any problems installing the extension please try to download the latest version of Extension Manager.



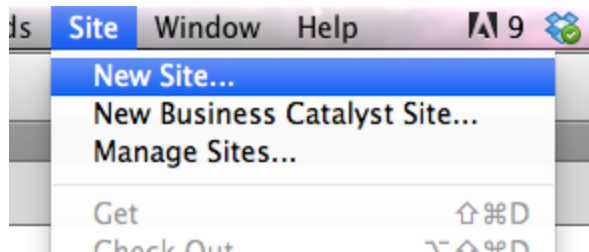
If you do not have the Adobe Extension Manager installed you will need to download it. You need to make sure that the Adobe Extension Manager you download matches your Dreamweaver version. For example if you have Dreamweaver CS6 you need to make sure to download Extension manager CS6. Below is a link to where you can download all versions of the Extension Manager:

Adobe Extension Manager Download

http://www.adobe.com/exchange/em_download/

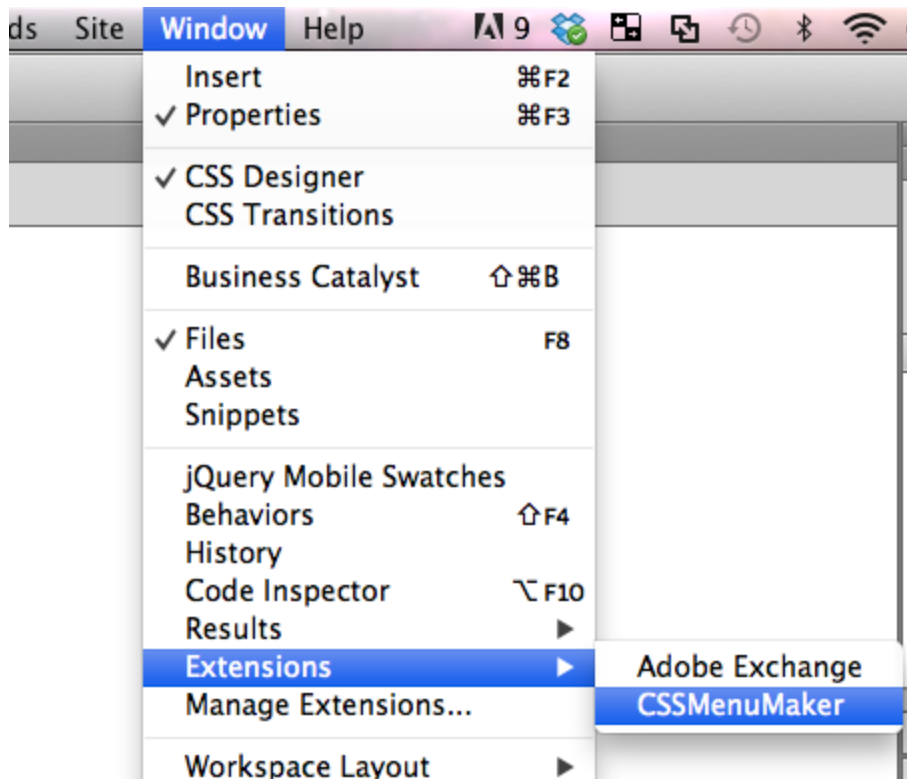
Getting Started

Before you can use the extension you need to make sure that you have created a new site and saved it. If you have not already done this, click **Site > New Site...**



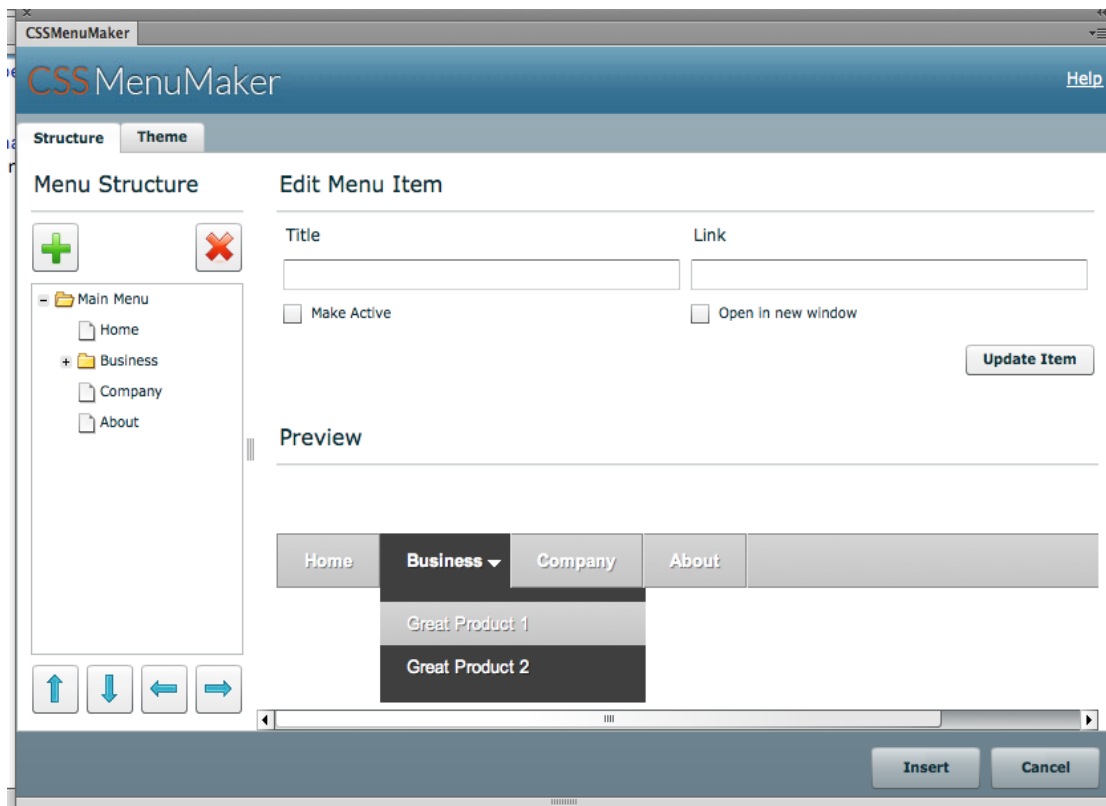
Launch Extension

To launch the CSS Menu Maker Extension simply click **Window > Extensions > CSS Menu Maker** while inside of Dreamweaver.



Create a Menu

The first step in creating a menu is to create the structure. On the left side of the extension is a panel called 'Menu Structure'. This is where you can create new menu items, move them around, and create sub menus.



Add a new menu item



Delete a menu item



Move Menu Items Around



Edit Menu Item

To change a menu item's title or link all you need to do is highlight the menu item by clicking it in the **Menu Structure** panel. Once you highlight it you can edit its properties in the **Edit Menu Item** panel. Once you are happy with your edits, click the **Update** button.

Change Menu Theme

To select a new theme for you menu click the **Theme** tab at the top of the extension.



Here you will see thumbnail views of all the menu themes available to you. When you find a theme you want, simply click **Select** to apply the new theme.

Note:

Not all of our menu themes are capable of doing sub menus. On the theme page you will see a **Max Levels** description next to each menu thumbnail. This lets you know how many levels the menu theme is capable of displaying.

Max Levels 1 = Theme does not have sub menus.

Max Levels 2 = Theme is capable of 1 Submenu

Max Levels 3 = Theme is capable of 2 Submenu